



PI MANUFACTURING

Powered by Infinite Solutions

Wireless HDMI Extender

HDMI-HGWI-200M Installation Manual

Contents

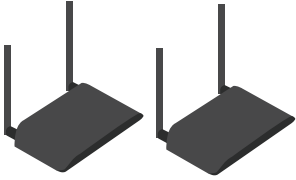
Important Safety Instructions	3
What's Included	4
Overview	5
Panel Illustration	5-6
Setup Instructions	7-8
Technical Specifications	9-11
Troubleshooting	12
FCC	13

Safety Information

To ensure your safety and the safety of others, please ensure you read the safety information before you operate this product.

- Do not use this product in humid or damp conditions.
- Avoid water from getting on / into the product.
- Do not use liquid or aerosol cleaners.
- To clean the product, use a soft, slightly damp cloth.
- The slots and openings on this product are for ventilation purposes. Do not cover or block them as this could cause overheating.
- There are no user-serviceable parts in this product.
- If servicing is required, always refer to a qualified service technician.

What's Included



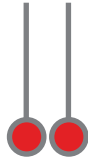
2 - TX / RX HDMI Extenders



2 - HDMI Cables



2 - 5V 2.5A Power Adapters



2 - IR Emitter / Receiver



1 - User Manual

Overview

Wirelessly extend HDMI signals up to 656 feet with IR support. The wireless HDMI extender supports resolutions up to 1080p 60Hz with a HDMI local loopout included for HDMI display on both the local (transmitter) and remote (receiver) side. Perfect for applications requiring both sides to be viewed. Built-in USB ports allow an additional keyboard and mouse to be plugged in for control if necessary. The wireless HDMI extender features low end to end latency (16ms), and can be used for various commercial or residential applications faced with wired limitations.

Panel Illustration



Transmitter

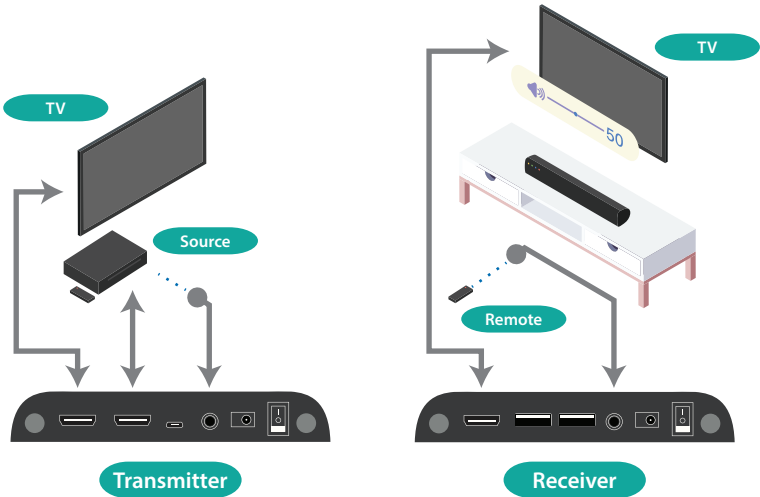
1. On/Off Switch
2. 5V DC In Power
3. IR (IR emitter)
4. Micro-USB (For connecting keyboard / mouse)
5. HDMI In (HDMI Source)
6. HDMI Out (HDMI Display)



Receiver

1. On/Off Switch
2. 5V DC In Power
3. IR (IR receiver)
4. USB (Keyboard or Mouse)
5. USB (Keyboard or Mouse)
6. HDMI Out (HDMI Display)

Setup Instructions



Transmitter

Step 1: Connect the HDMI In to a HDMI source.

Step 2: Connect the HDMI Out to a HDMI display.

Step 3: Connect the IR emitter and point it to the IR window of the HDMI source.

Step 4. Connect the 5V DC power adapter.

Receiver

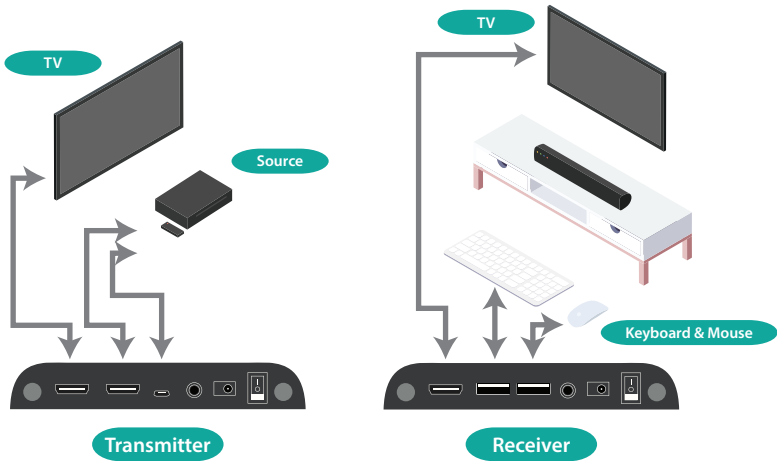
Step 5. Connect the HDMI Out to a HDMI display.

Step 6. Connect the IR receiver cable and place it near the television where you will point the remote control.

Step 7. Connect the 5V DC power adapter.

Step 8. Turn on the power switch on for both the transmitter and receiver.

Setup Instructions



Keyboard / Mouse Control

The HDMI extender includes support for plugging in a USB keyboard / mouse for control.

Transmitter

Step 1: Plug in a Micro-USB B Male to USB Type A Male cable from the transmitter to the HDMI source (Note: The source needs to be able to support USB keyboards / mice).

Receiver

Step 2: Plug in the USB keyboard / mouse on the USB ports

Technical Specifications

Specifications	
Power Supply	5V DC 2.5A
Video Formats	1080p / 50 / 60Hz 1080i / 50 / 60Hz 720p / 50 / 60Hz 576p / 50Hz 576i / 50Hz 480p / 60Hz 480i / 60Hz
HDCP	1.3
Transmit Distance	Up to 656ft (200m) at 1080p (clear line of sight)
Audio format	48/44.1 KHz, 16bit digital audio
System Latency	16ms
IR Frequency	20-60KHz
Antenna	Detachable external antennas (5dBi)

Technical Specifications

Specifications (Continued)

Operating Temperature	0°C ~ 40°C (32°F ~ 104°F)
Storage Temperature	-40°C ~ 70°C (-40°F ~ 158°F)
Product Dimensions (L x W x H)	9.5 x 13.9 x 2cm (each)
Weight	120g (0.26 lbs / each)
Enclosure	Plastic

Technical Specifications

LED Indicators

Blue & Red Light (Power)	Red light: Power is off or abnormal Blue light: Power is on and detected HDMI input source
Orange (Pairing)	Blinking orange: Unpaired Solid orange: Paired
Green (WiFi)	Solid green: WiFi working Flickering green: Data is transferring

Troubleshooting

No Video or Bad Video Connection

- It takes about 45 seconds after powering on the HDMI extender for the signal to relay correctly on both the TX and RX
- Make sure the HDMI cables are plugged in correctly. HDMI cables are included in the package. If you are using another HDMI cable, please sure you use one that includes good shielding to prevent noise
- The HDMI extender uses a 2.4GHz frequency. Avoid interference by other 2.4GHz wireless devices
- If problems still occur, please restart both the TX and RX

Bad Audio

- The HDMI extender only supports 48/44.1kHz 16-bit digital audio. Make sure the source device is set to the correct audio standard before use

Short Coverage Distance

- The wireless distance between the TX and RX is up to 200 meters or 656 feet with a clear line of sight. Distance will be shortened if there are too many interfering signals or when going through concrete walls

IR Blaster is not Working

- Use the original remote control that came with your source device
- Make sure the IR emitter is pointed at the IR window of the source device
- The distance from the IR receiver to the remote control should be within 5 meters
- The IR cables are based on a 20-60kHz frequency. This should support most IR remote controls in the market

USB Keyboard / Mouse not Working

- Make sure the TX side is connected via a Micro-USB to USB Type A cable

This equipment has been tested and found to comply with the limits for a Class B digital device, pursuant to part 15 of the FCC Rules. These limits are designed to provide reasonable protection against harmful interference in a residential installation. This equipment generates, uses and can radiate radio frequency energy and, if not installed and used in accordance with the instructions, may cause harmful interference to radio communications. However, there is no guarantee that interference will not occur in a particular installation. If this equipment does cause harmful interference to radio or television reception, which can be determined by turning the equipment off and on, the user is encouraged to try to correct the interference by one or more of the following measures:

- Reorient or relocate the receiving antenna.
- Increase the separation between the equipment and receiver.
- Connect the equipment into an outlet on a circuit different from that to which the receiver is connected.
- Consult the dealer or an experienced radio/TV technician for help.

Caution: Any changes or modifications to this device not explicitly approved by manufacturer could void your authority to operate this equipment.

This device complies with part 15 of the FCC Rules. Operation is subject to the following two conditions:

- (1) This device may not cause harmful interference, and
- (2) this device must accept any interference received, including interference that may cause undesired operation.

To comply with FCC RF exposure compliance requirements, this grant is applicable to only mobile configurations. The antennas used for this transmitter must be installed to provide a separation distance of at least 20 cm from all persons and must not be colocated or operating in conjunction with any other antenna or transmitter.