



---

# ADU8612-E

2019.05.31

# Content

**01**

Features

**02**

Highlights

**03**

Solution Topology

# Features



Decoder & Controller



ADU8612-E

- Decoder & controller all-in-one device
- Provide 12ch DVI-D output interfaces
- Provide 2ch DVI-D and 2ch VGA input interfaces
- Single port decoding capability up to 16ch@1080P(30fps)
- Decoding up to 12MP resolution
- Support window opening, roaming and picture in picture
- Support for virtual LED
- Decode video stream in H.265/ H.264
- Display split 1/2/3/4/5/6/7/8/9/10/13/16
- Support local/remote upgrade
- Support fine pixel LED display

# Content

**01** | Features

**02** | Highlights

**03** | Solution Topology

# Appearance



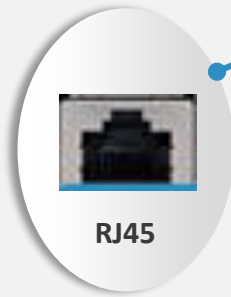
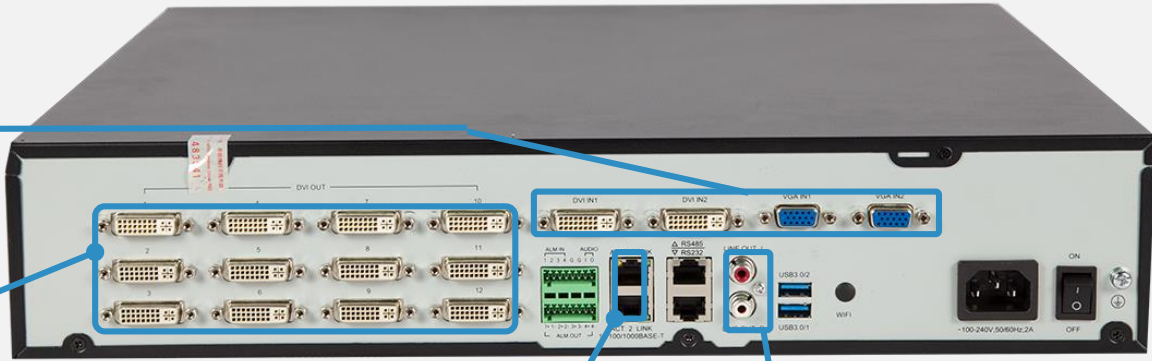
Input channel

**4\* Input channel:**  
2\* DVI Input channel  
2\* VGA Input channel



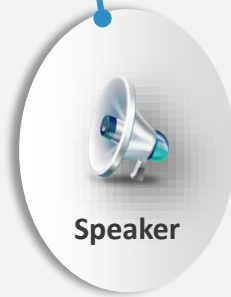
Output channel

**12\* Output channel:**  
Support 2\*2, 2\*3, 2\*4, 3\*3, 3\*4 and other specifications of TV wall



RJ45

**Network Interface:**  
2\* RJ-45, 10M/100M/1000M adaptive Ethernet Interfaces



Speaker

**Audio Output:**  
Supports audio playback, dual channel

# Highlights

Compatible with h. 264/ h. 265/ super 265

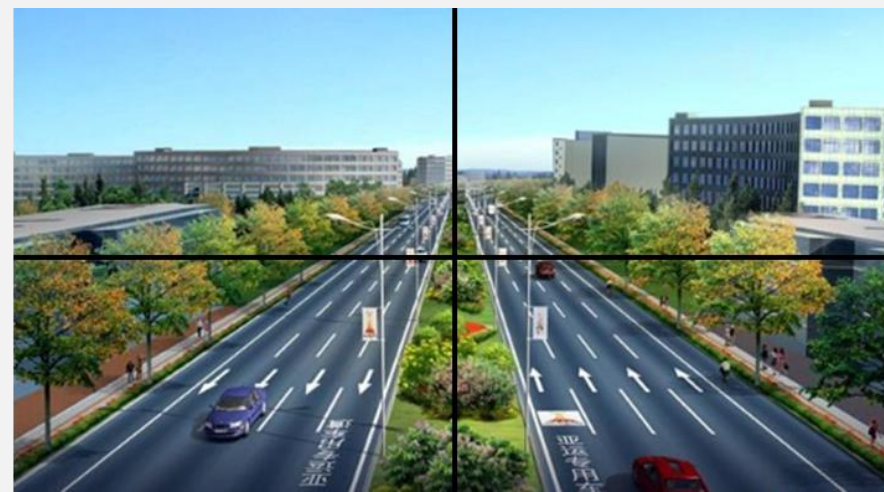


Supports decoding 4K images



# Video Wall Control

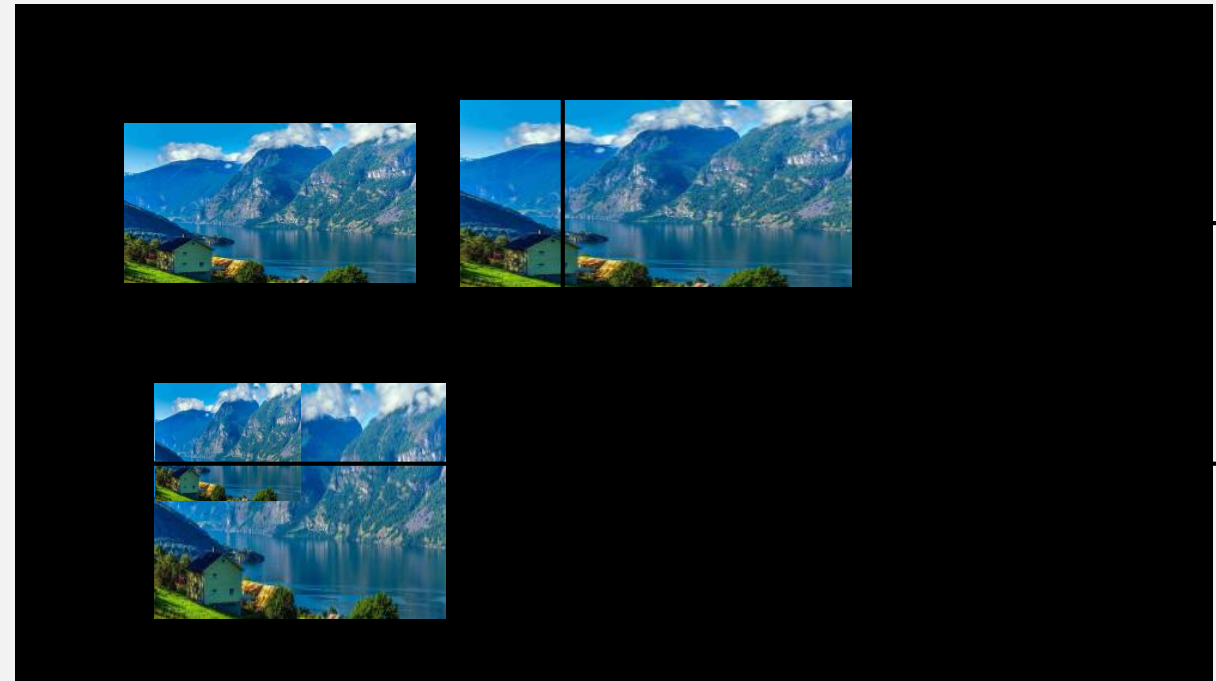
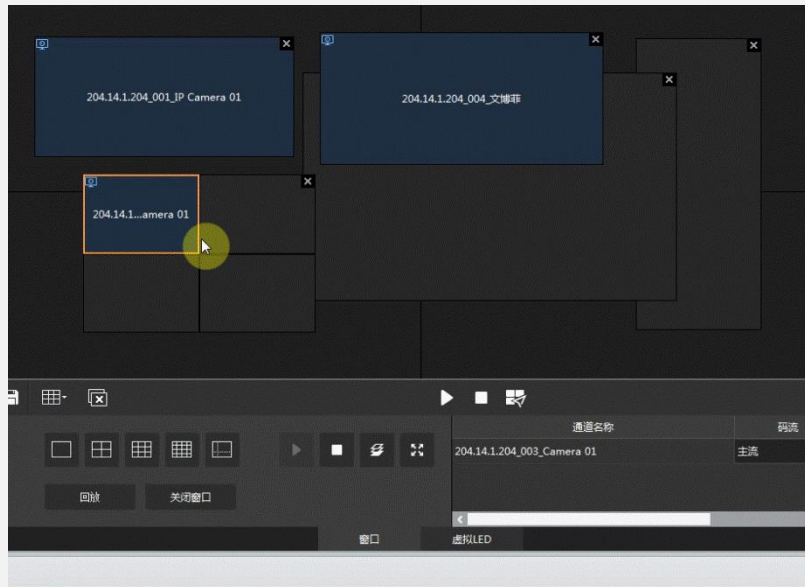
**PC signal input:** ADU8612-E support 4 local input channels, which can display the signal output of the computer to the TV wall



**Video wall control:** the physical TV wall is made up of screens. It can support to control several screens for a big video wall and full-screen display.

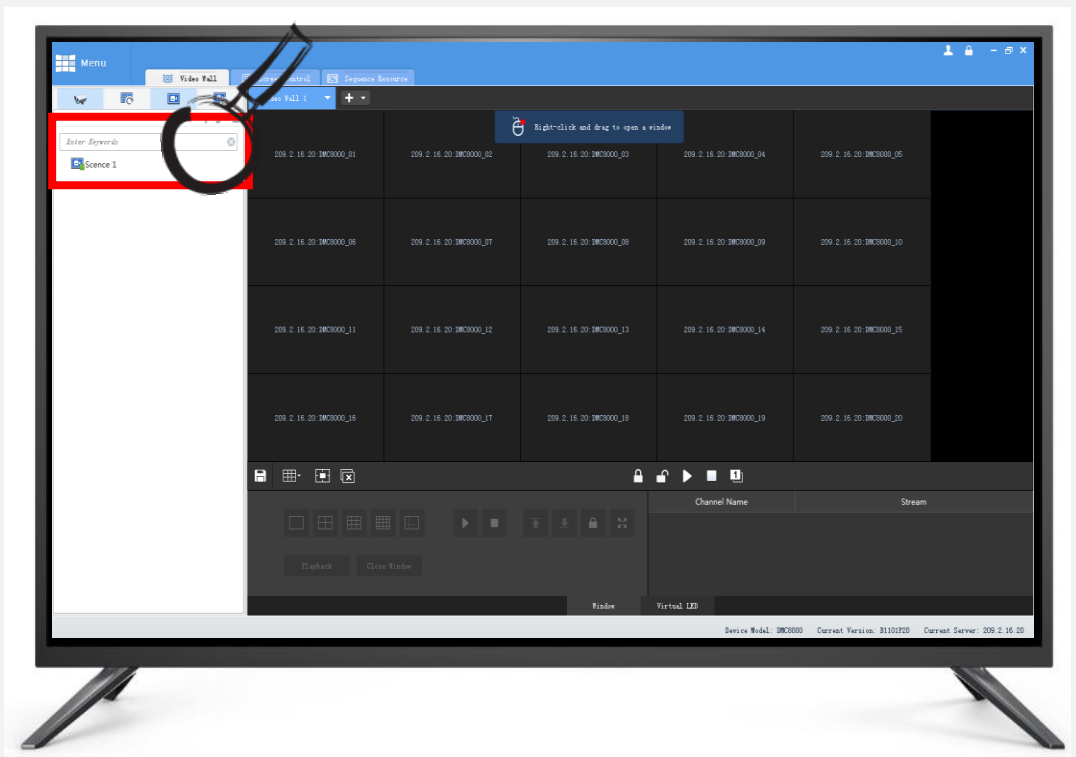
# Image Split




**Image Split:** After the window is opened on the TV wall, the screen in a window can be divided into two parts, and then the corresponding number of camera resources in the window can be dragged in.





# Scenes



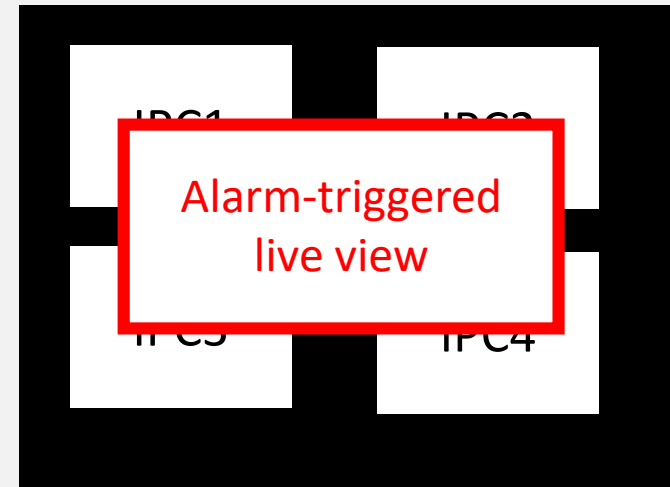
Save Scene	Edit Scene	Scene plan
 <p>Support scene saving, so that the subsequent selection call</p>	 <p>Supports scene editing and layout changes</p>	 <p>Support the setting of scene plan, automatically switch scenes in different time periods</p>

# Alarm-triggered live view

**Alarm-triggered live view:** An alarm will trigger a pop-up window playing live video from the camera. (The Client EZ Wall is temporarily unsupported)

An alarm

trigger a pop-up window ...



TV Wall

# Double-click to magnify

Double-click a window to magnify it, and double-click again to restore.



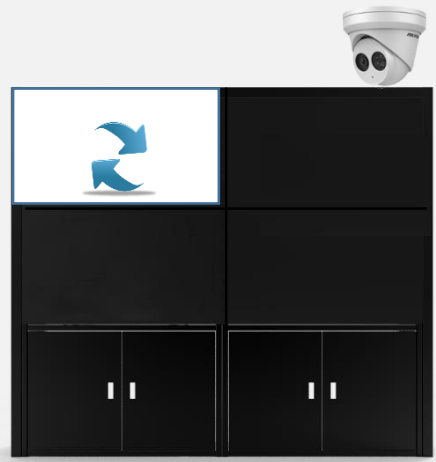
Magnify  
→



# Task Tour

**Windows task tour:** Play video according to task tour in one window or some windows .

**Scene task tour:** The scenes switch from one to the next at the same interval that you set.



In a single window, carry the camera sequence up the wall



**Play video according to task tour in one window.**



The big screen only has 4, but the camera has 200...



**Task tour in all windows**



The number of cameras is over 200, but the key positions such as entrance and exit need constant attention...



**Task tour in multiple windows**




There are many buildings, each building camera number is not consistent, separate to see the picture of different buildings...



**Scene task tour**

# Screen Switch

Control LCD Splicing Screen/LED Display On /Off on the client

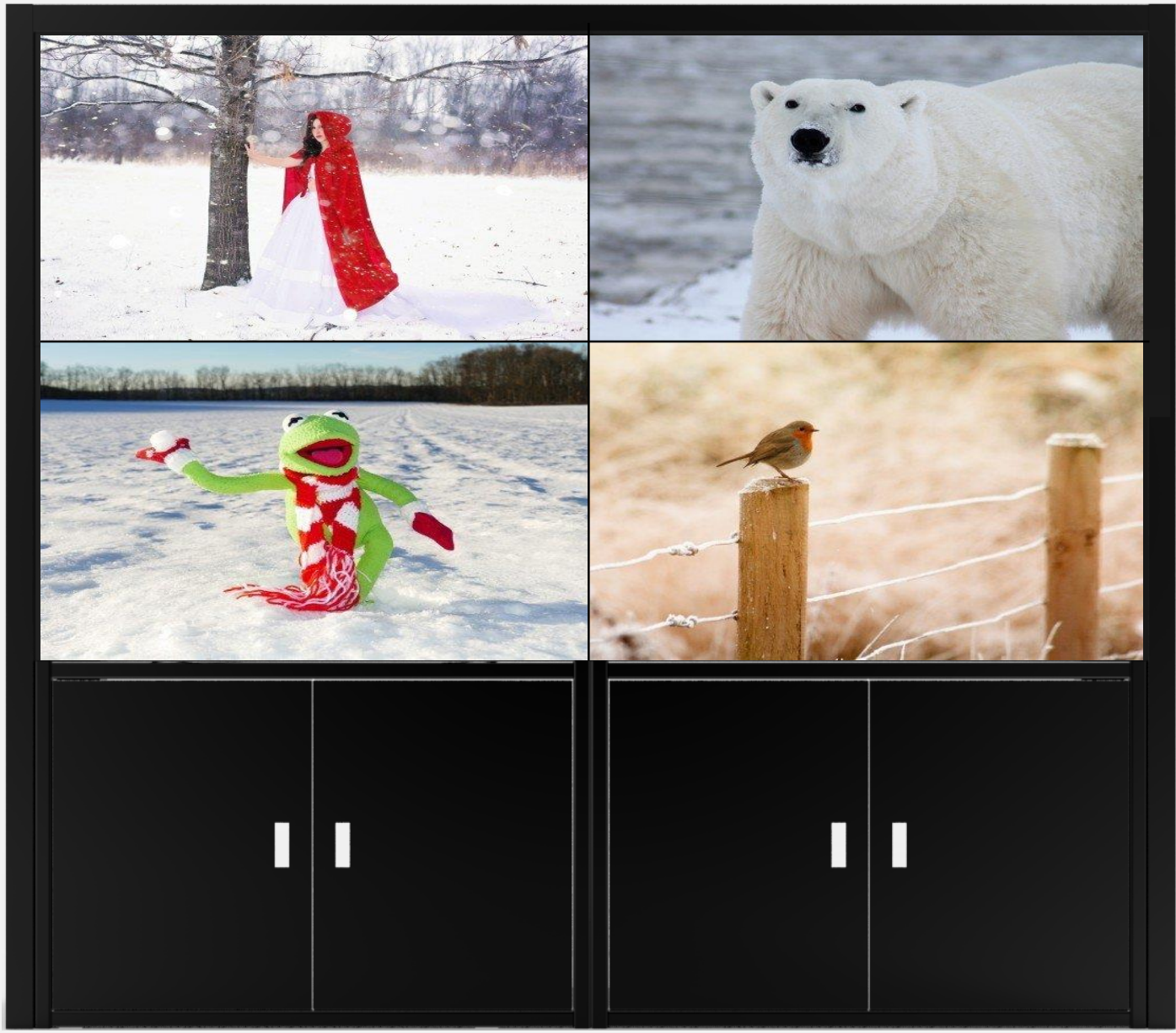
Turn On Screen 

Turn Off Screen

Turn On At

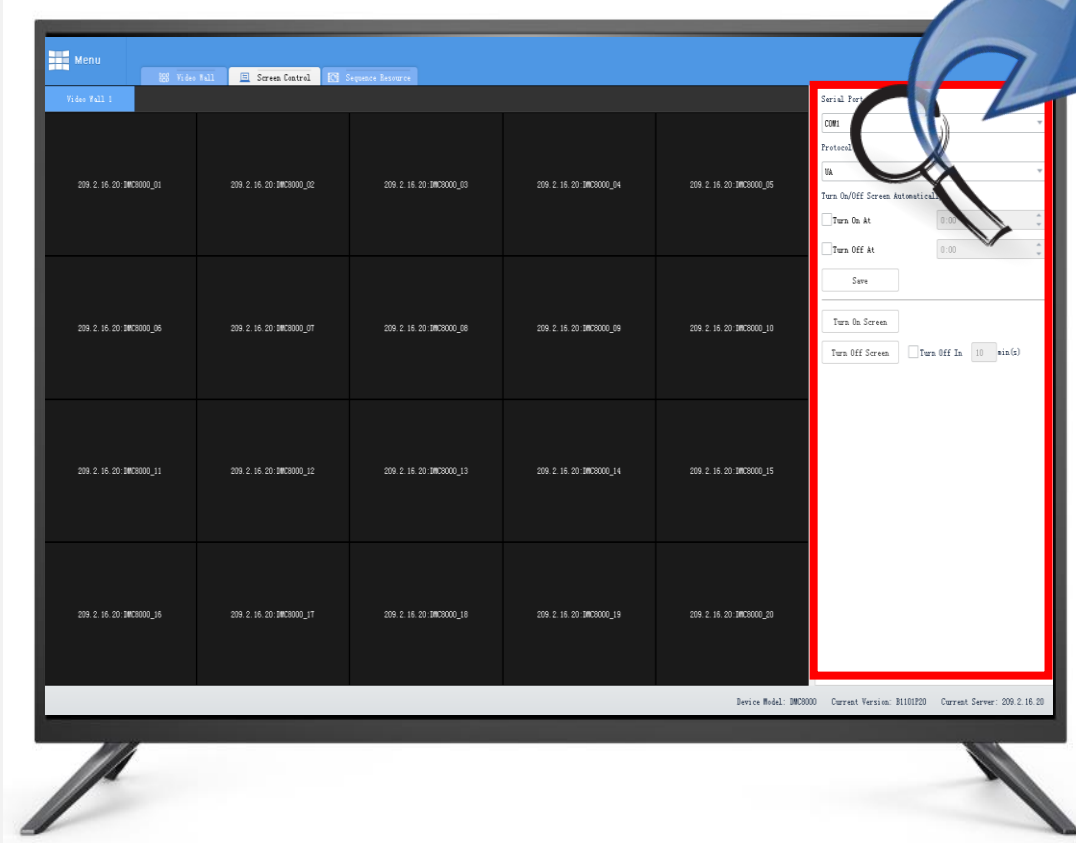
Turn Off At

Turn Off In  min(s)





# Screen Switch



Serial Port  
COM1

Protocol  
UA

Turn On/Off Screen Automatically

Turn On At 0:00

Turn Off At 0:00

Save

---

Turn On Screen

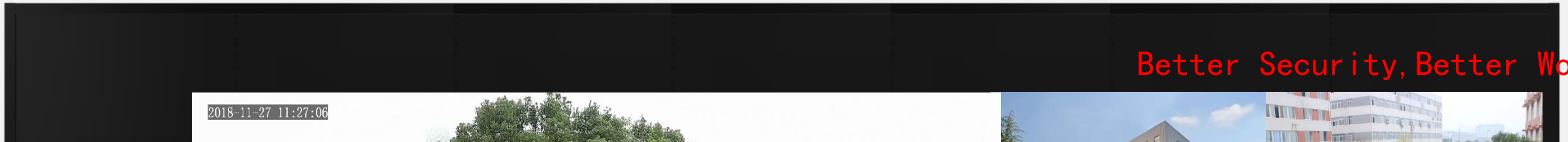
Turn Off Screen  Turn Off In 10 min(s)

Can be directly controlled on the client EZ Wall screen On or Off.



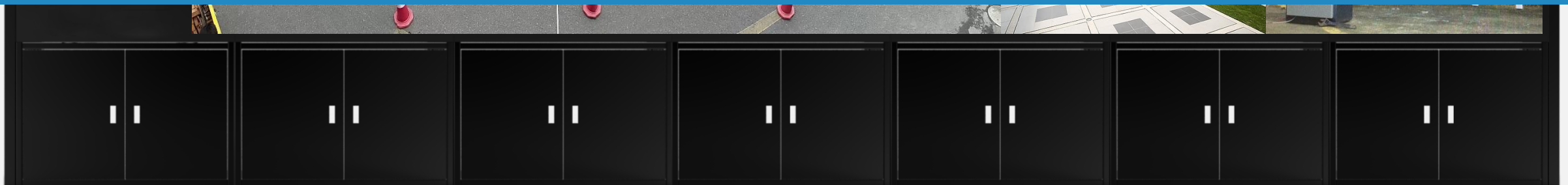
# Virtual LED

You can overlay text on video wall windows and set the background, customize text, content, size, color, space, alignment, transparency, and scrolling.



**You can roll up and down, left and right**

**Meet all your needs**



# Strong Compatibility

Client EZWall



It can be connected to  
the third party IPC and NVR



UNV



Company A



Company B



Company C



Company D



Company E



UNV'S NVR



Other NVR

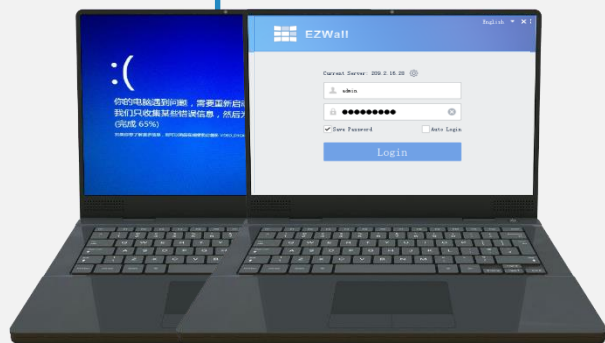


it can be connected to  
the third party IPC and NVR



# Keep the Configuration

ADU8612-E



Have you ever experienced a computer crash where all the decoders need to be reconfigured???

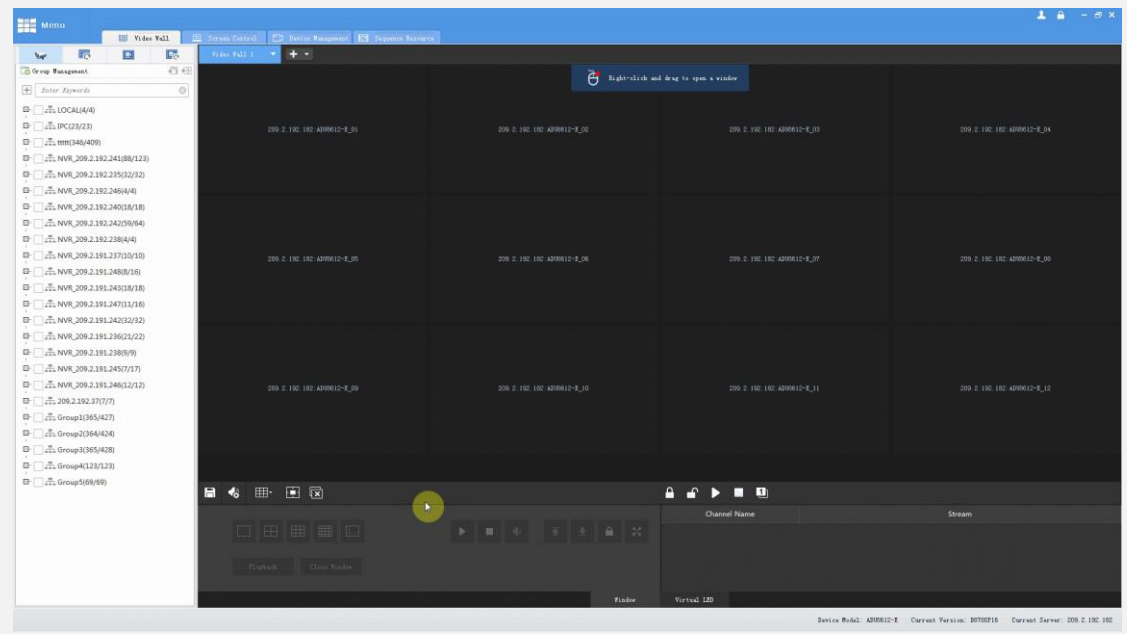
**Don't worry, using the EZ Wall client, any computer logging into the decoder IP can get the previous configuration**

# Easy to operate



# VS

It takes day and night to added 200 channels of live view on the TV wall by using other manufactures' devices.



Now, click "IPC display on the TV wall" function, it could be easily done

# Content

**01**

Features

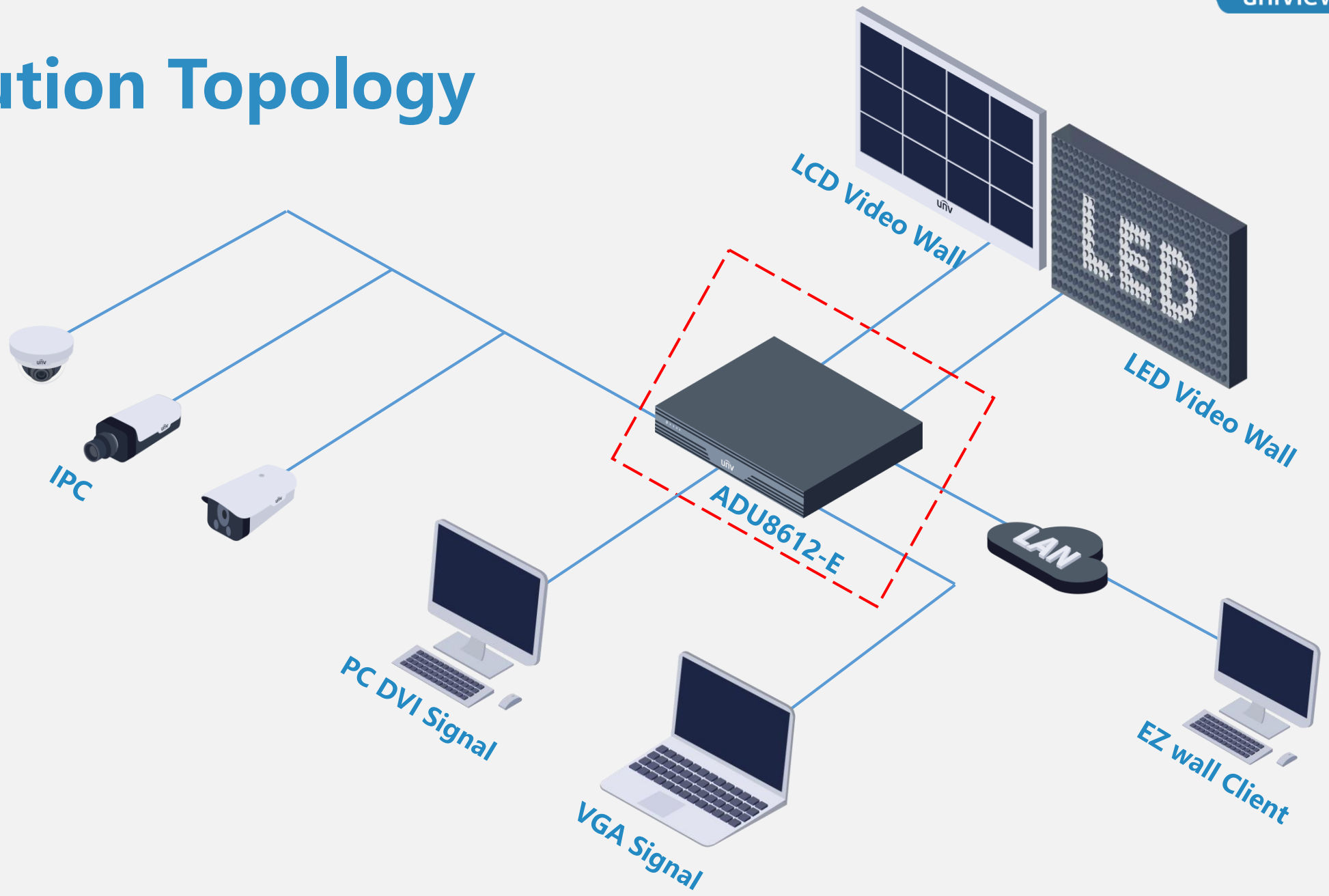
**02**

Highlights

**03**

Solution Topology

# Solution Topology



**Note: ADU8612-E support 12pcs screens MAX.**



---

**Better Security, Better World**