

Smart Management Box

SMBOX02 Series



Features

- Integrated design, combining the SMSERVER, smart power management module, power supply switch, heater, fan, and warning light into one. Most IPC and IP Speaker models can be installed on the smart management box.
- Users can remotely monitor the working status of the smart management box and its loaded devices and receive alarm notifications via mobile app and EZCloud.
- Supports automatic restart of output port. When the smart management box detects a network disconnection, it will automatically power down the network devices and restart them.
- Supports manual restart of output port. If devices such as IPC or IP Speaker are faulty, users can manually restart the power supply output port via mobile app and EZCloud.
- Equipped with surge protector, circuit breaker, and software protection function, forming a three-layer protection mechanism to effectively resist risks such as lightning, short circuit, overvoltage, and overcurrent.

Specifications

Model	SMBOX02-R
Power Input	
Input Type	DC 10.8 V to DC 14.4 V
Input Port	3-pin Connector
Power Output	
Socket	N/A
DC 12V	1-ch 2.5A, DC5521, Used for powering the router
PoE	8 RJ45 10M/100M self adaptive Ethernet Interface
PoE Power	Max 30 W for single port, Max 75 W in total
PoE Standard	IEEE 802.3at, IEEE 802.3af

Function

System Functional Description	Power Information Collection,Power Switch Detection,Power Switch Control,Thermostatic Fan,Automatic Network Restart,Door Open Detection,Warning Light,Fault Reporting and Analysis
-------------------------------	--

SMSSERVER

Decoding Format	Ultra 265, H.265, H.264
Decoding Capability	Smart Off: 2 x 16MP@30, 2 x 12MP@30, 4 x 4K@30, 8 x 4MP@30 Smart On: 2 x 12MP@30, 2 x 4K@30, 6 x 4MP@30, 8 x 3MP@30
Audio Compression	G.711A, G.711U
Bandwidth	80 Mbps
Protocols	TCP/IP, P2P, NTP, DHCP, PPPoE, HTTP, HTTPS, DNS, DDNS, SNMP, SMTP, RTSP, IPv6, IPv4
IP Video Input	8-ch
FTP/Schedule/Event Snapshot	4-ch snapshot (max. 8 MP (3840 × 2160) video resolution, with 1080P snapshot resolution)
Recording Resolution	16 MP/12 MP/8 MP/6 MP/5 MP/4 MP/3 MP/1080P/960P/720P/D1/2CIF/CIF
Smart by IPC	Face Detection,Face Comparison,Vehicle Detection,SIP (Intrusion Detection, Cross Line Detection, Enter Area, Leave Area),Ultra Motion Detection (UMD),Temperature Detection (Fire Detection, Smoking Detection, Temperature Measurement, Smoke and Fire Detection),People Counting (People Flow Counting, Crowd Density Monitoring),Video Metadata,Traffic Monitoring
Smart by SMBOX	Face Detection,Face Comparison,Ultra Motion Detection (UMD),Smart Intrusion Prevention (SIP)
VCA Search	Face Snapshot Search, Face Comparison Search, Motor Vehicle Search, Non-Motor Vehicle Search, Human Body Search, General Search, People Counting Report, Heat Map, SmartSearch+, AcuSearch
by SMBOX with face detection cameras	8-ch
by SMBOX with normal cameras	2-ch
Vehicle Picture Library	Up to 5 vehicle picture libraries, with up to 25,000 vehicle pictures in total
SIP by SMBOX	4-ch
UMD by SMBOX	8-ch
Capacity of Snapshot Records	500 thousand records for face snapshot, One and a half millions records for SIP and vehicle
General Alarm	Defocus Detection, Scene Change Detection, Object Left Behind, Object Removed, Auto Tracking, Motion Detection, Tampering, Human Body Detection, Video Loss, Alarm Input, Audio Detection
Alert Alarm	IP Conflict, Network Disconnected, Disk Offline, Disk Abnormal, Illegal Access, Hard Disk Space Low, Hard Disk Full, Recording/Snapshot Abnormal, Array Damaged, Array Degraded
Network Interface	1 RJ45 10 M/100 M/1000 M self-adaptive Ethernet Interface
USB	1 × USB2.0, 1 × USB3.0
ONVIF	Support

Hard Disk

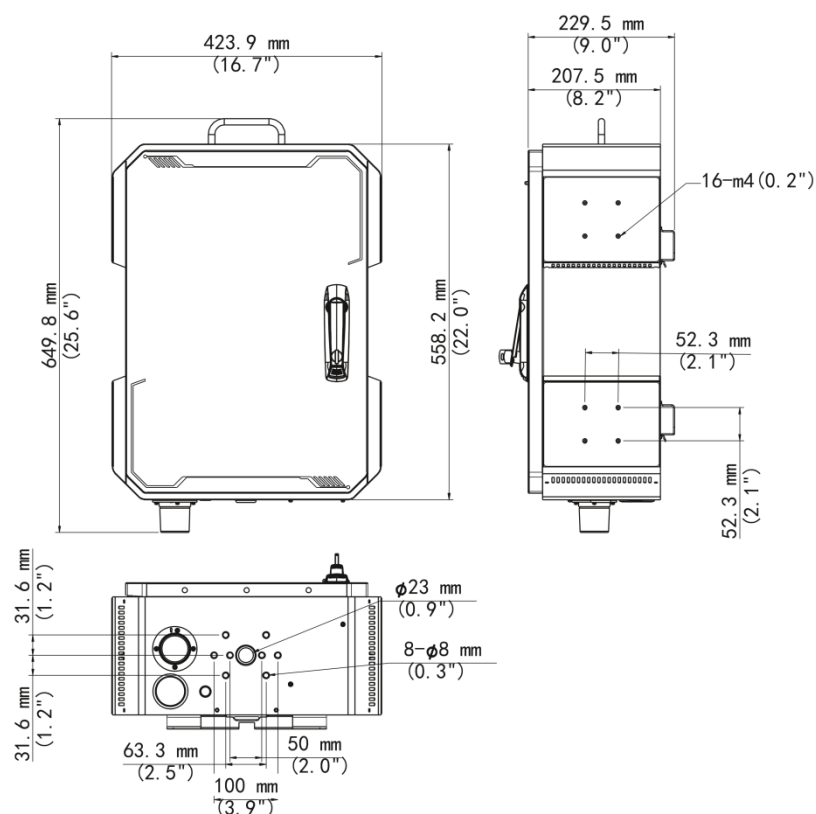
Hard Disk	1 x SATA interface, up to 16TB HDD (2.5" or 3.5"), or up to 4TB SSD (2.5")
-----------	--

Power Lightning Protector

Maximum discharge current	40 kA
---------------------------	-------

Rated discharge current	20 kA
Response time	L-PE ≤ 25 ns, N-PE ≤ 25 ns
General	
Surge Protection	6 KV
Working Temperature	When using HDDs: -40°C ~ 60°C (-40°F ~ 140°F); When using SSDs: -40°C ~ 70°C (-40°F ~ 158°F)
Working Humidity	≤ 90% RH (non condensing)
Weight (Without Camera)	≤ 15 kg (33.07 lb)
Dimensions	530 (H) × 420 (W) × 200 (D) mm
Slot dimensions	The space has a depth of 55mm and a width of 190mm for installing a 4G router
Rating	IP56
Adaptable Mounting Bracket	
Left side	Up to 2 units can be installed, supporting TR-JB07/WM03-F-IN, TR-JB07/WM03-G-IN, TR-JB07/WM03-H-IN, TR-JB07/WM04-B-IN, TR-JB05-B-IN or TR-JB07-D-IN
Right side	Up to 2 units can be installed, supporting TR-JB07/WM03-F-IN, TR-JB07/WM03-G-IN, TR-JB07/WM03-H-IN, TR-JB07/WM04-B-IN, TR-JB05-B-IN or TR-JB07-D-IN
Bottom	Up to 1 unit can be installed, which cannot be installed simultaneously with the IP Speaker and supports TR-UF45-A-IN
Top	Support the installation of an IP speaker, no mounting bracket required.

Dimensions



Zhejiang Uniview Technologies Co., Ltd.

No. 369, Xietong Road, Xixing Sub-district, Binjiang District, Hangzhou City, 310051, Zhejiang Province, China

Email: overseasbusiness@uniview.com; globalsupport@uniview.com

<http://www.uniview.com>

©2025 Zhejiang Uniview Technologies Co., Ltd. All rights reserved.

*Product specifications and availability are subject to change without notice.

*Despite our best efforts, technical or typographical errors may exist in this document. Uniview cannot be held responsible for any such errors and reserves the right to change the contents of this document without prior notice.